

## Walk in Meshach's moccasins

*"My mind cannot imagine a more beautiful sight than could be obtained from the highest grounds of the Hoop-Pole Ridge, which commanded a view of the valley between that and the great Back-Bone . . . It was a grand sight to watch the tall grass, rolling in beautiful waves with every breeze which passed over its smooth surface, as well as the herds of deer skipping and playing with each other"*

These are the words of Meshach Browning from his book describing much of the area that would become Deep Creek Lake. His book not only chronicles his hunting expeditions of bear, deer and panthers, but also provides a fascinating account of pioneer life in the early 1800's in western Maryland. While much has changed since his time, there are still many spots mentioned by him that you can still experience today.

We invite you to explore Garrett County, learn about Meshach Browning and share the respect and appreciation he had for our natural surroundings and the wildlife therein.

[www.meshach.org](http://www.meshach.org)

## Where to go to learn more



**Meshach Browning History Center:** public park, 8 mile trail system, historical exhibit and outdoor art installation at the McHenry Community Park  
[deepcreeklions.org](http://deepcreeklions.org)

**Cabin Room at Oakland Museum:** artifacts related to Browning including original portraits and a quilt made for him by his mother



[garrettcountymuseums.com](http://garrettcountymuseums.com)



**Browning's grave:** marker erected by Browning's descendants and a MD Historical Society plaque

[www.hmdb.org](http://www.hmdb.org)

## Explore Mountain Maryland with

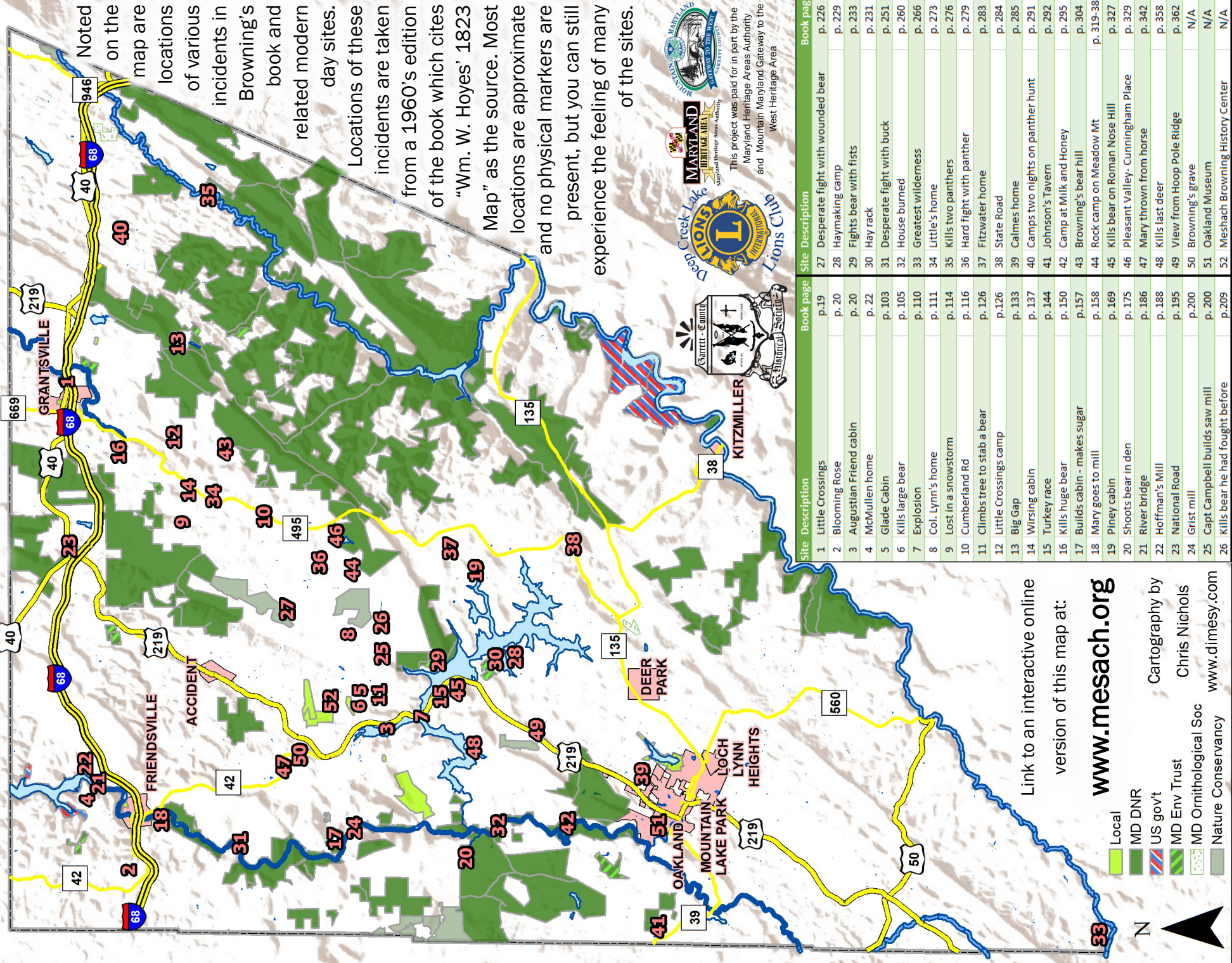
# Meshach Browning "Father of Garrett County"



Meshach Browning (1781-1859) was an early settler of western Maryland and a prolific hunter. His book, Forty-four Years of the Life of a Hunter, provides one of the best accounts of pioneer life in the Appalachian Mountains during the early 1800's.

[www.meshach.org](http://www.meshach.org)

# Meshach Browning Sites in Garrett County



Noted on the map are locations of various incidents in Browning's book and related modern day sites.

Locations of these incidents are taken from a 1960's edition of the book which cites "Wm. W. Hoyes' 1823 Map" as the source. Most locations are approximate and no physical markers are present, but you can still experience the feeling of many of the sites.



This project was paid for in part by the Maryland Heritage Areas Authority and Mountain Maryland Gateway to the West Heritage Area

Site	Description	Book page	Site Description	Book page	
1	Little Crossings	p.19	27	Desperate fight with wounded bear	p. 226
2	Blooming Rose	p. 20	28	Haymaking camp	p. 229
3	Augustian Friend cabin	p. 20	29	Fights bear with fists	p. 233
4	McMullen home	p. 22	30	Hay rack	p. 231
5	Glade Cabin	p.103	31	Desperate fight with buck	p. 251
6	Kills large bear	p.105	32	House burned	p. 260
7	Explosion	p.110	33	Greatest wilderness	p. 266
8	Col. Lynn's home	p.111	34	Little's home	p. 273
9	Lost in a snowstorm	p.114	35	Kills two panthers	p. 276
10	Cumberland Rd	p.116	36	Hard fight with panther	p. 279
11	Climbs tree to stab a bear	p.126	37	Fitzwater home	p. 283
12	Little Crossings camp	p.126	38	State Road	p. 284
13	Big Gap	p.133	39	Calmes home	p. 285
14	Wirsing cabin	p.137	40	Camps two nights on panther hunt	p. 291
15	Turkey race	p.144	41	Johnson's Tavern	p. 292
16	Kills huge bear	p.150	42	Camp at Milk and Honey	p. 295
17	Builds cabin - makes sugar	p.157	43	Browning's bear hill	p. 304
18	Mary goes to mill	p.158	44	Rock camp on Meadow Mt	p. 319-386
19	Piney cabin	p.169	45	Kills bear on Roman Nose Hill	p. 327
20	Shoots bear in den	p.175	46	Pleasant Valley - Cunningham Place	p. 329
21	River bridge	p.186	47	Mary thrown from horse	p. 342
22	Hoffman's Mill	p.188	48	Kills last deer	p. 358
23	National Road	p.195	49	View from Hoop Pole Ridge	p. 362
24	Grist mill	p.200	50	Browning's grave	N/A
25	Capt Campbell builds saw mill	p.200	51	Oakland Museum	N/A
26	Kills bear he had fought before	p.209	52	Meshach Browning History Center	N/A

Link to an interactive online version of this map at:

[www.mesach.org](http://www.mesach.org)

- Local
  - MD DNR
  - US gov't
  - MD Env Trust
  - MD Ornithological Soc
  - Nature Conservancy
- Cartography by  
Chris Nichols  
www.dimesy.com